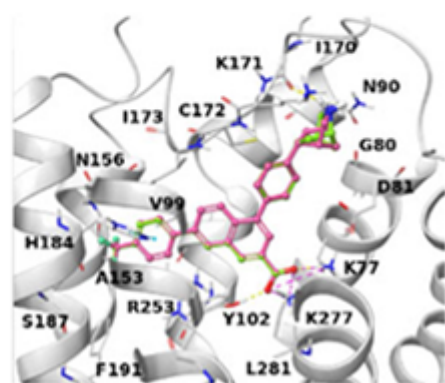
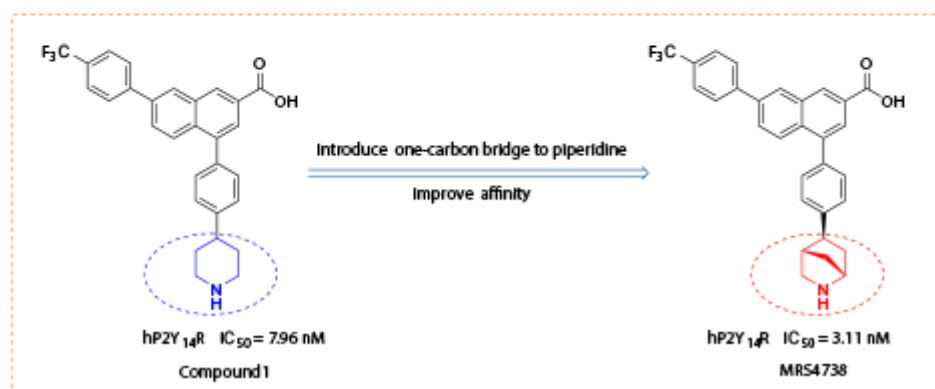
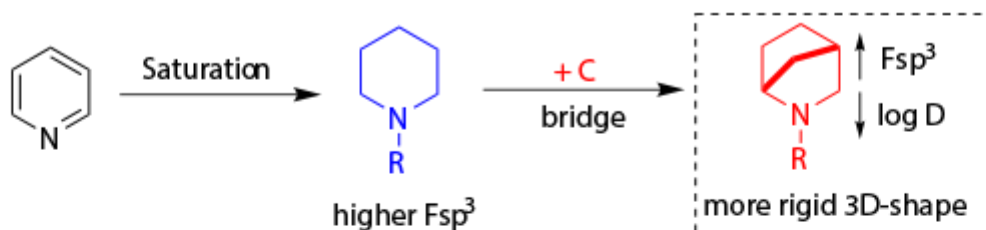


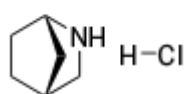
Building Blocks / Pharmaceutical Intermediates / Chemical Reagents

www.chemexpress.cn

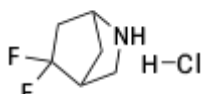
Conformational restriction is an emerging strategy applied in current drug discovery programs to modify the pharmacological characteristics of bioactive molecules. The conformationally restricted 2-azabicyclo[2.2.1]heptane analog has greater potential to complement the spatial subtleties and selectivity for target proteins owing to the three-dimensional structure and stereochemical properties. Moreover, the framework possesses high F_{sp^3} and low log D that are important elements for drug development. So far, Chemscene has developed many 2-azabicyclo[2.2.1]heptane building blocks.



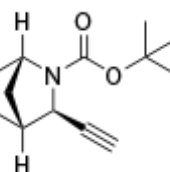
Wen, Z. et al., *J. Med. Chem.* 2022, 65, 4, 3434–3459



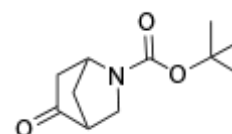
Cat. No. : HY-W089093
CAS: 112458-38-5



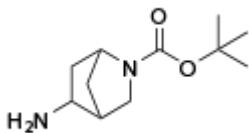
Cat. No. : HY-W048571
CAS: 1783656-28-9



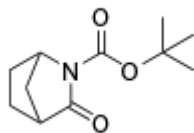
Cat. No. : HY-W762541
CAS: 2765531-44-8



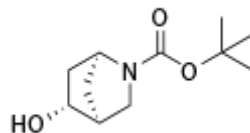
Cat. No. : HY-34550
CAS: 198835-06-2



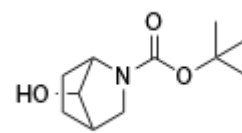
Cat. No. : HY-W066696
CAS: 207405-62-7



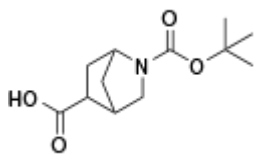
Cat. No. : HY-42416
CAS: 167081-32-5



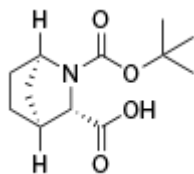
Cat. No. : HY-34550A
CAS: 1932042-59-5



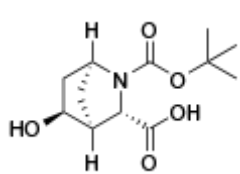
Cat. No. : HY-W054295
CAS: 1221818-31-0



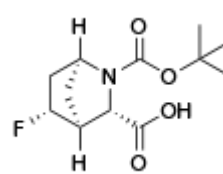
Cat. No. : HY-W060250
CAS: 1363210-41-6



Cat. No. : HY-78793
CAS: 291775-59-2



Cat. No. : HY-W067288
CAS: 1446519-44-3



Cat. No. : HY-49508
CAS: 1173294-38-6

ChemExpress LLC

Tel: +86-21-58998590 Fax: +86-21-53700326 Email: sales@chemexpress.cn

Address: 6/F, No. 2 Building, No. 720, Cailun Road, Shanghai, P.R.China

NAMIKI SHOJI CO.,LTD.

Tel: +81-3-3354-4026 Fax: +81-3-3352-2196 Email: info@namiki-s.co.jp

This email was an automatically-generated message. Please don't reply directly to e-mail message.

If you have any questions, please contact us via email at sales@chemexpress.cn.